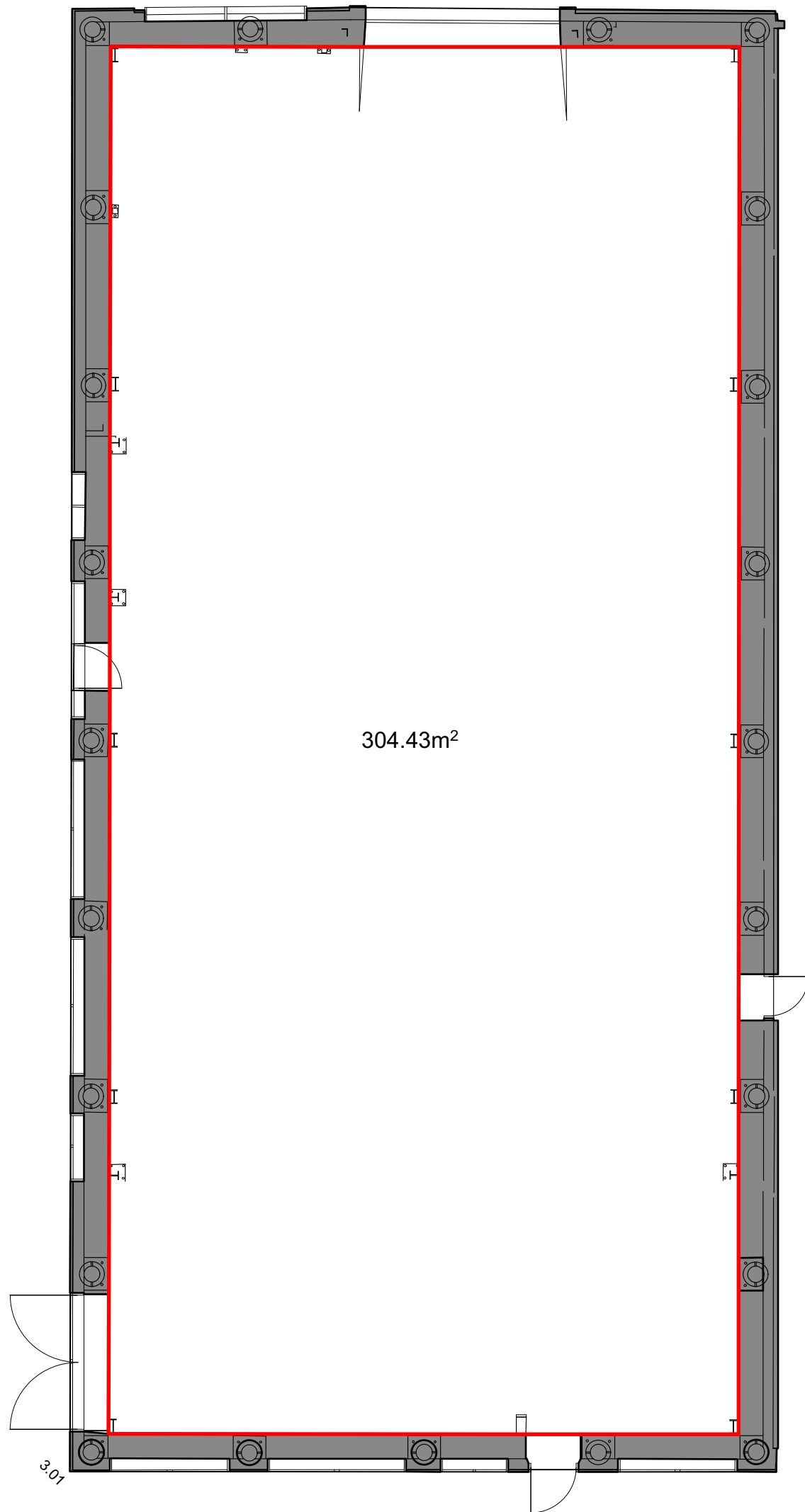




BUILDING 11. THE RETORT HOUSE
WHOLE BUILDING NLA :- 304.43m²

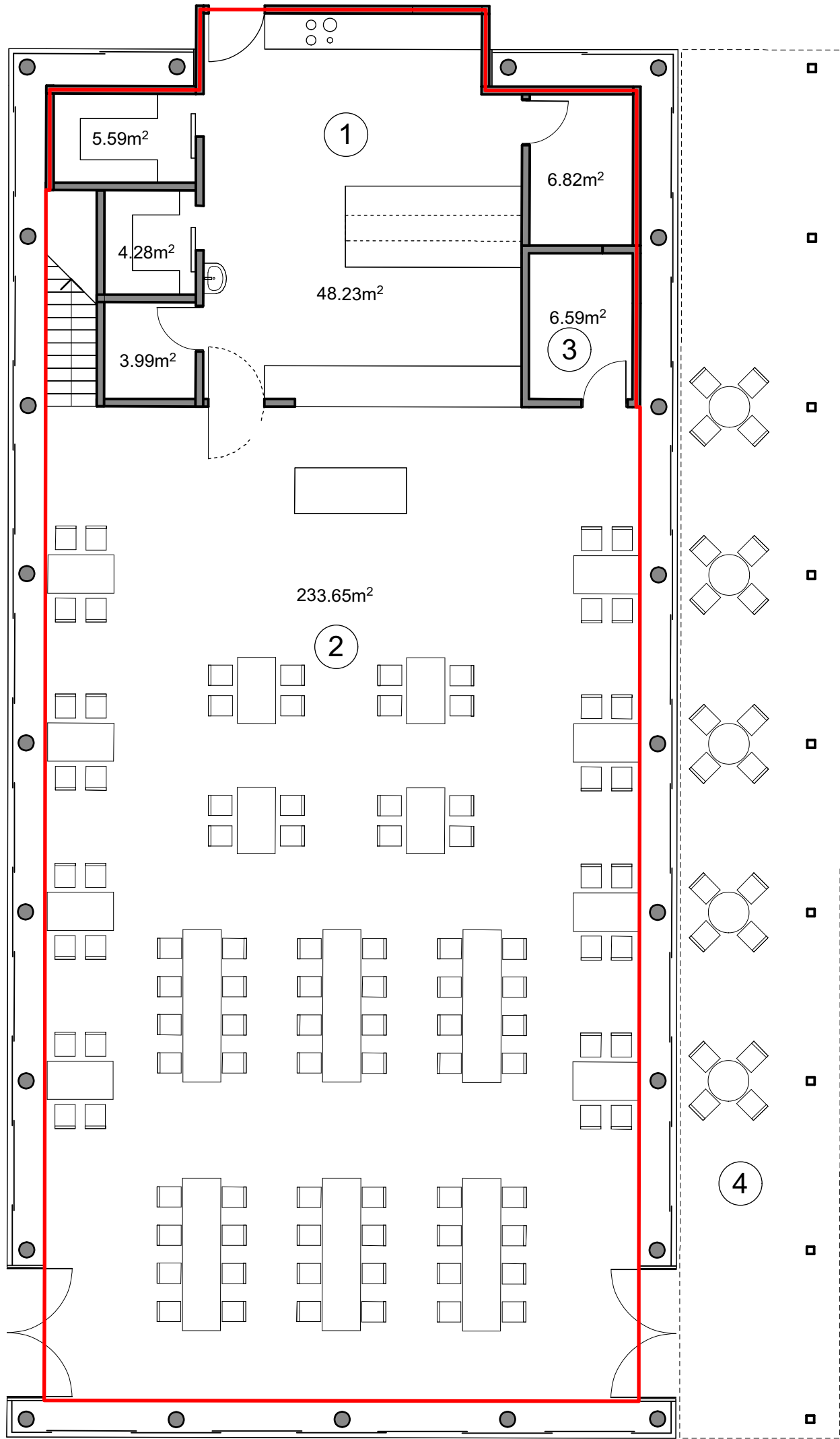


BUILDING 11, THE RETORT HOUSE

GROUND FLOOR NLA :- 304.43m²

WHOLE BUILDING NLA :- 304.43m²



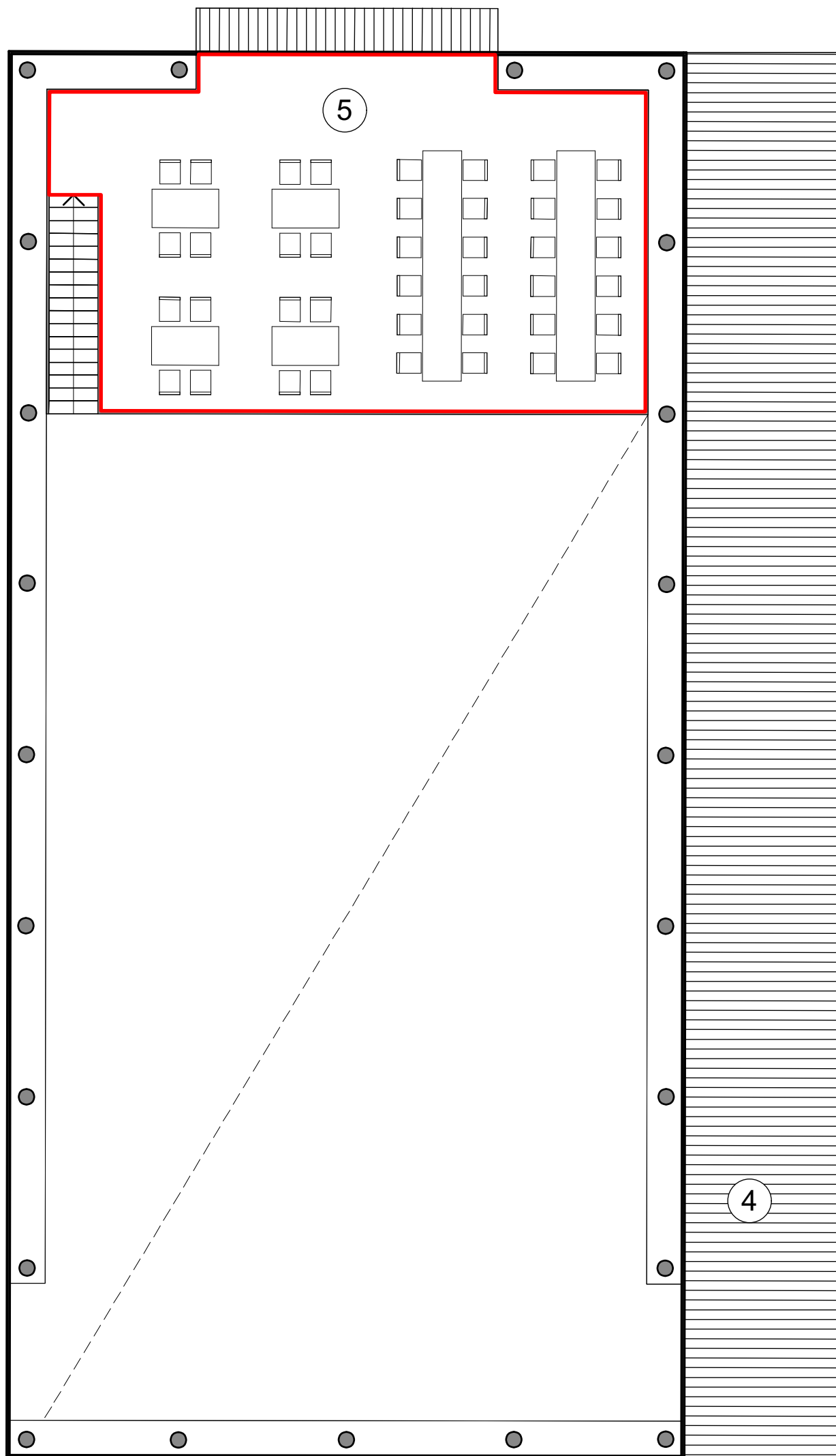


- ① Commercial kitchen, storage, cold and freezer
- ② Internal dining - able to be opened up with operable glazing
- ③ Storage
- ④ Outdoor covered dining adjact to park

BUILDING 11, THE RETORT HOUSE

PROPOSED GROUND FLOOR NLA :- 309.15m²
 PROPOSED WHOLE BUILDING NLA :- 380.79m²





- ④ Outdoor covered dining adjact to park
- ⑤ Internal mezzanine level

BUILDING 11, THE RETORT HOUSE

PROPOSED MEZZANINE FLOOR NLA :- 71.64m²

PROPOSED WHOLE BUILDING NLA :- 380.79m²

